

MAX

RE·BAR·TIER®
RB398S

**ENGINEERED FOR
PERFORMANCE**

TIES UP TO #5 X #6 WITH 21GA. WIRE



**FASTER THAN
HANDTYING**

80 YEAR
ANNIVERSARY

MAX**ENGINEERED FOR PERFORMANCE****RE·BAR·TIER®****RB398S**

FEATURES/BENEFITS

1 FAST TYING SPEED

Faster than handtying rebar. Increase your productivity.

2 LIGHTWEIGHT AND COMPACT

Ergonomic design built for easy maneuvering and one handed operation.

3 LI-ION BATTERY

This rechargeable battery can complete approximately 4000 ties per charge.

4 BRUSHLESS TWISTING MOTOR

Promotes energy efficiency and long lasting life for the tool versus a brushed motor.

5 BUILT TO LAST

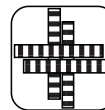
The TwinTier is built to last with durability that you can count on time and time again from MAX.



TOOL SPECIFICATIONS

| | |
|--------------------|---|
| Weight | 5.0 lbs. |
| H x W x L | 12" x 4 $\frac{1}{8}$ " x 11 $\frac{3}{8}$ " |
| Tying Speed | Approx. 1 Sec./Tie |
| Rebar Capacity | #3 x #3 to #5 x #6 |
| Wire Series | TW898 |
| Wire Diameter | 21ga. |
| Ties Per Coil | Approx. 120 |
| Ties Per Charge | Approx. 4000 |
| Coils Per Box | 50 |
| Battery | JPL91450A |
| Voltage | DC 14.4V |
| Recharge Time | Approx. 80% Capacity-60 minutes 100% Capacity - 80 minutes |
| Standard Equipment | Battery, Charger, Belt-Hook and Plastic Carrying Case |

4 BARS



MINIMUM

#3x#3x#3x#3

MAXIMUM

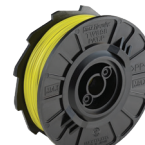
#4x#4x#4x#4

TW898 TIE WIRE SERIES

TW898

21 GA.
Steel Wire

TW898-PC

21 GA.
Poly Coated Wire

TW898-EG

21 GA. Electro.
Galvanized Wire

TW898-USA

21 GA. Buy
American Wire**TW898S - STAINLESS STEEL WIRE IS ALSO AVAILABLE AS A SPECIAL ORDER ITEM.**

APPLICATIONS ▶▶

Commercial Buildings | Foundations | Road and Bridge Construction | Precast Plants

Radiant Heating Tubes | Tilt-Up Construction | Pools | Basements | Sand Bags | Electrical Conduit

MAX**MAX USA CORP.**

205 Express St, Plainview NY 11803

800-223-4293

www.maxusacorp.com

DEALER: