

UNIVERSAL SCREW



U2 FASTENERS™ Universal Screw™ is ideal for replacing those old deck screws. The features of the Universal Screw™ work together to drive and secure this screw in many types of materials that are used in residential construction.

FEATURES:

- ✓ Structural & ACQ treated lumber compliant. See report ER-454.
- ✓ Chrome 6 free & Prop 65 compliant U-Gold coating.
- ✓ Tapper Point, consisting of the Cork Screw Start and Blade Cutting Thread for easy piercing and alleviating strain on the material.
- ✓ Tight Star Recess system grasps the U-Bit tightly and can be installed with one hand.
- ✓ Underneath the Universal head Burrow Pockets are dynamically engineered to help countersink into the toughest of materials.
- ✓ Below the smooth shank is the Reamer Thread, which enlarges the hole to create a passage when drawing materials together and reduces tension for the screw head.

Available in lengths from ½" up to 12" in hardened steel and from 1-¾" to 4" in 316 Marine Grade Stainless Steel.



CONSTRUCTION SCREW



The **U2 Construction Screw™**, also known as CS Screw, is the next generation of construction screws that are replacing lag screws.

FEATURES:

- ✓ Structural & ACQ treated lumber compliant. See report ER-454.
- ✓ Chrome 6 free & Prop 65 compliant U-Gold coating.
- ✓ Dome Head enhances the structural capability.
- ✓ Tapper Point which consists of the Cork Screw Start and Blade Cutting Thread for easy piercing and alleviating strain on the material.
- ✓ Tight Star Recess system grasps the U-Bit tightly and can be installed with one hand.
- ✓ Talon Grip holds the screw tight to prevent loosening and uses its nibs to dig into the material when countersunk.
- ✓ Reamer Thread enlarges the hole in the material to create a larger passage when drawing materials together and reduces tension on the screw head.

Available in lengths from 1-½" up to 20" in hardened steel, in lengths from 1-½" to 8" made of 316 Marine Grade Stainless Steel, and in lengths from 3-½" to 6" in case-hardened carbon steel with black nano coating.



Tight Star Recess

This patented driving system is designed to grasp the U-BIT tightly and the fastener can be installed with one hand.



Reamer Thread

Enlarges the hole in the material to create a better passage when drawing material together to reduce tension on the screw.



Talon Grip

Underneath the screw head of the CS Screw the Talon Grip holds the screw tight to prevent loosening and uses its nibs to dig into the material when countersunk.



Tapper Point

The Tapper Point consists of the Cork Screw Start and Blade Cutting Thread for easy piercing and alleviating strain on the material.



Burrow Pockets

The Burrow Pockets underneath the head of the Universal Screw burrow and alleviate pressure when countersinking the head.

- ✓ BUILDING CODE COMPLIANT = QUALITY FROM THE START
- ✓ CR 6+ FREE COATING = HEALTH & SAFETY
- ✓ TIGHT RECESS = EFFICIENCY
- ✓ TAPPER POINT = TIME SAVER
- ✓ REAMER THREAD = BATTERY LIFE & PHYSICAL ENERGY SAVER
- ✓ EFFICIENCY + PRODUCTIVITY = MONEY SAVED



CONNECT WITH US:

U2Fasteners.com
sales@U2Fasteners.com

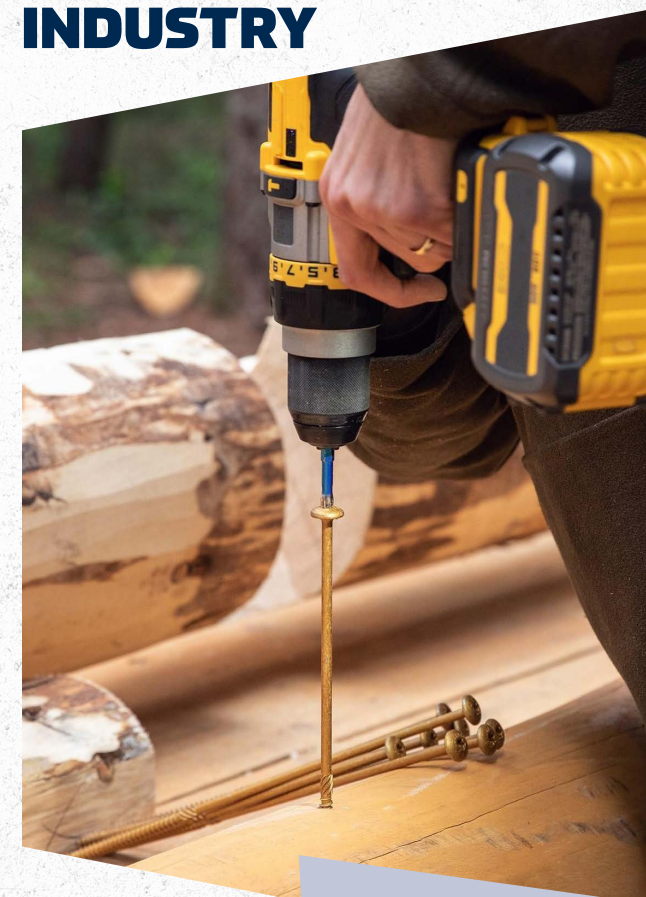
TF: 855-895-7096
TX: 807-623-6224

@U2Fasteners

Surpassed testing in 0.6pcf ACQ Heavy Duty GROUND CONTACT



THE GAME CHANGER IN THE FASTENER INDUSTRY



Fasteners that
contractors
and engineers
agree on.



FINE SCREW



The Fine Screw™ is designed especially for carpenters who do fine professional work. When building the most delicate of projects, contractors prefer Fine Screw™ for its modest head size. Also available in white.

FEATURES:

- ✓ Chrome 6 free & Prop 65 compliant U-Gold coating.
- ✓ With its slim shank and bulging thread this screw can be used without damaging even the hardest wood.
- ✓ Tapper Point which consists of the Cork Screw Start and Blade Cutting Thread for easy piercing and alleviating strain on the material.
- ✓ Tight Star Recess system grasps the U-Bit tightly and can be installed with one hand.

Available in lengths of 1-¼" to 5" in case hardened steel, & white, and in lengths of 1-½" to 3" in 316 Marine Grade Stainless Steel.

★ CODE COMPLIANT QUALITY ★

CAP SCREW



The Cap Screw™ is an ideal light duty interior and exterior screw. This screw makes all your small projects easier with the drawdown strength of the head and the clean finish.

FEATURES:

- ✓ Chrome 6 free & Prop 65 compliant U-Gold coating.
- ✓ Dome Head with rim and Cutting Ribbon underhead.
- ✓ Tapper Point which consists of the Cork Screw Start and Blade Cutting Thread for easy piercing and alleviating strain on the material.
- ✓ Tight Star Recess system grasps the U-Bit tightly and can be installed with one hand.

Available in lengths 1-¼" to 3-½" and in lengths of 1-¼" to 2-½" available in 305 Grade Stainless Steel. Also fully threaded 10x1-⅝" is ideal for stone siding.

★ CODE COMPLIANT QUALITY ★

STEEL SIDING SCREW



The Steel Siding Screw™ is an ideal metal roofing, siding, garage door seal, trim and flashing screw, with a low profile white powder coated head and EPDM washer.

FEATURES:

- ✓ Dome Head, Powder coated white with rim and black EPDM rubber washer.
- ✓ Tapper Point which consists of the Cork Screw Start and Blade Cutting Thread for easy piercing and alleviating strain on the material.
- ✓ Tight Star Recess system grasps the U-Bit tightly.

Available in length of 10 x 1-½" in case hardened carbon steel.

★ CODE COMPLIANT QUALITY ★

BLACK FLAT HEAD SCREW



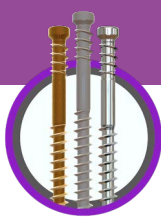
The Black Flat Head Screw™ is the epitome of versatility and style in fastening solutions. Crafted to meet a full range of construction projects, it perfectly complements various applications with its sleek black finish and flat head design.

FEATURES:

- ✓ Flathead design with Talon Grip™ ensures increased pull-through resistance and a clean, polished look when drilled into materials.
- ✓ Tight Star Recess system grasps the U-Bit tightly.
- ✓ Tapper Point which consists of the Cork Screw Start and Blade Cutting Thread for easy piercing and alleviating strain on the material.
- ✓ A CR3-free base coat finished with our proprietary black nano-coating ensures ultimate protection against corrosion, wear, and friction.

Available in #12 and #25/64 in lengths ranging from 3-⅜" to 9"

RE-FINE SCREW



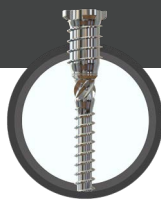
The Re-Fine Screw™ is the brother to the Fine Screw™ but has the RE-FINE Thread at the top that depresses synthetic materials for a clean finished appearance and can be used for small adjustments of material. Also available in white and stainless steel.

FEATURES:

- ✓ Chrome 6 free & Prop 65 compliant U-Gold coating.
- ✓ With its slim shank and bulging thread this screw can be used without damaging even the hardest wood.
- ✓ Tapper Point which consists of the Cork Screw Start and Blade Cutting Thread for easy piercing and alleviating strain on the material.
- ✓ Tight Star Recess system grasps the U-Bit tightly and can be installed with one hand.
- ✓ RE-FINE Thread depresses synthetic surface materials for a clean finished appearance.

Available in lengths of 2" to 3-⅝" in case hardened steel & white, and in lengths of 2-½" to 3" in 316 Marine Grade Stainless Steel.

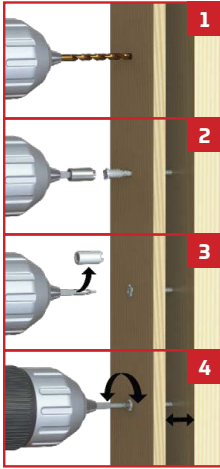
TOPSTAR SCREW



The TopStar™ is designed to replace shims when levelling doors, windows and cabinets. The adjustable screw can make door hanging a one person job. Use the Crown Bit to install and only the bit to re-adjust to level.

Available in lengths 2-½", 3-⅝" and 4".

1. Predrill frame/jamb with ⅝" drill bit.
2. Engage crown bit into TopStar screw head and drive flush to surface of frame or jamb.
3. For adjustments remove crown from bit.
4. Engage bit into center hole of TopStar screw head and adjust to your requirements.



★ CODE COMPLIANT QUALITY ★

VINYL EXTRUSION SCREW



The Vinyl Extrusion Screw™ is an adjustable screw ideal for vinyl window retro-fits over old aluminum window frames. It has a small low profile white powder coated head and tek drill point.

FEATURES:

- ✓ Dome Head, Powder coated white with rim.
- ✓ Tek Point and Blade Cutting Thread for easy piercing and alleviating strain on the material.
- ✓ Tight Star Recess system grasps the U-Bit tightly.

Available in length of 10 x 3-⅝" in case hardened carbon steel.

★ CODE COMPLIANT QUALITY ★

U-BITS



U-Bits™ are specifically designed to fit snug & firm on the Tight Star Recess of the U2 FASTENERS screw assortment.

However, U2 FASTENERS also fit the traditional star drive. U-Bits™ are impact driver ready and are made of hardened steel to prevent wear and tear.

- ✓ Sizes range of 1" to 6" in T-10, T-15, T-20, T-25, T-30 and T-40.
- ✓ Packaged in cards of two bits per card or in packs of 25pcs.

